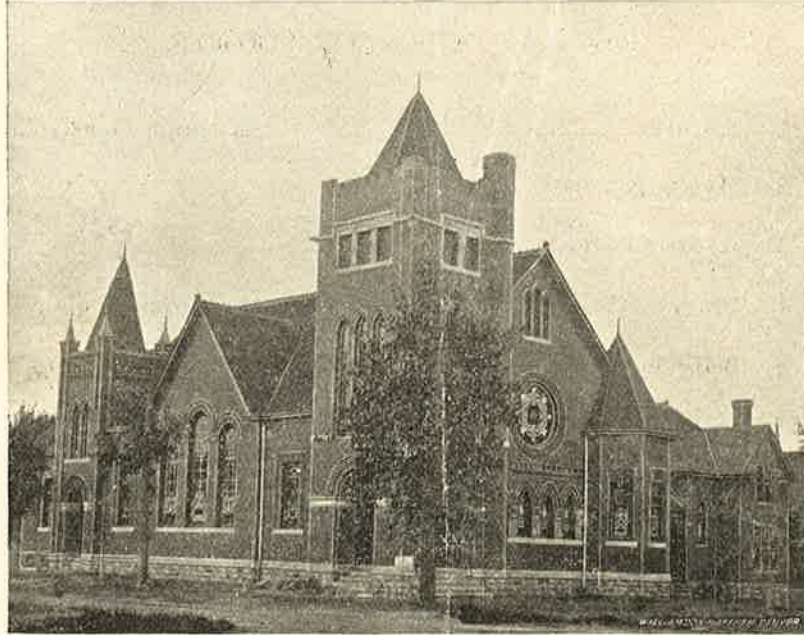


DEDICATORY PROGRAM  
CANON CITY  
Methodist Episcopal Church



SEPTEMBER 17, A. D. 1899.

"Enter thy temple, Glorious King,  
And write thy name upon its shrine,  
Thy peace to shed, thy joy to bring,  
And seal its courts forever thine."

# ORDER OF EXERCISES.

---

9:30 A. M., SUNDAY SCHOOL.

---

10:30 A. M. DEDICATION SERVICES.

1. Anthem..... Male Quartette.
2. Hymn, No. 867.....
3. Apostle's Creed.....
4. Prayer..... The Rev. M. D. Hornbeck, D. D.
5. Anthem..... Choir.
6. Scripture Reading..... The Rev. J. H. Merritt.
7. Gloria Patri.....
8. Offering.....
9. Hymn, No. 868.....
10. Sermon..... The Rev. Camden M. Coburn, D. D.
11. Dedication.....
12. Hymn, No. 862.....
13. Benediction.....

## AFTERNOON.

---

3:00 Platform Meeting. Addresses by Mayor F. E. Thomas,  
Ex-Pastors J. H. Merritt, C. W. Brewer, M. D. Horn-  
beck, N. H. Lee.

Pastors of other Churches of the City, B. E. Harl,  
W. J. Fisher, S. R. McLaughlin, W. D. Connor,  
J. W. Busard, and Prof. J. H. Allen.

Special Music by Epworth League Choir.

Solos by Miss Amy Ragsdale, Miss Selleck.

---

## EVENING.

6:30 Epworth League Rally, joined by the Local Union of  
Young People, addressed by the Revs. M. D. Hornbeck  
and N. H. Lee.

7:30 Sermon by the Rev. Claudius B. Spencer, D. D.  
Hymns, No's 117, 463, 510.

## HISTORICAL DATA.

---

The first Methodist Episcopal Church of Canon City was organized February, 1866, and in the same year the first building was purchased. The second Church was erected in 1879.

The Rev. George Murray was the first Pastor and the Rev. John L. Dyer the first Presiding Elder.

The Parsonage, which adjoins the new Church, was completed in 1893.

The church at corner Main and Fifth was sold and the new edifice begun in the winter of 1898-9. Value of new Church and ground, \$15,000.

---

### BUILDING COMMITTEE, 1899.

ROBERT CHASE,  
B. G. WOODFORD,

J. W. MILSOM,  
PETER LOY,

R. A. CHASE.

---

### MINISTRY.

ISAAC W. JOYCE, Bishop.

S. H. KIRKBRIDE, Presiding Elder,

R. A. CHASE, Pastor.